

**Test:** Primary 3 - Term 4 (SA2) Science (School S)

**Points:** 59 points

**Name:** \_\_\_\_\_

**Score:** \_\_\_\_\_

**Date:** \_\_\_\_\_

**Signature:** \_\_\_\_\_

Select multiple choice answers with a cross or tick:

Only select one answer

Can select multiple answers

**Question 1 of 50**

Primary 3 Science (Term 4) 2 pts

Which one of the following statements is not true about living things?

- 
- A)** Living things reproduce
  - B)** Living things do not die
  - C)** Living things respond to changes around them
  - D)** Living things need food air and water to survive

Study the table below.

Properties	X	Y
Able to make food	No	Yes
Able to grow	Yes	Yes
Can reproduce	Yes	Yes
Need air, food and water	Yes	Yes

What can X and Y be respectively?

	X	Y
1)	Hamster	Rose Plant
2)	Rabbit	Table
3)	Toy Car	Fish
4)	Sunflower Plant	Bird's Nest Fern

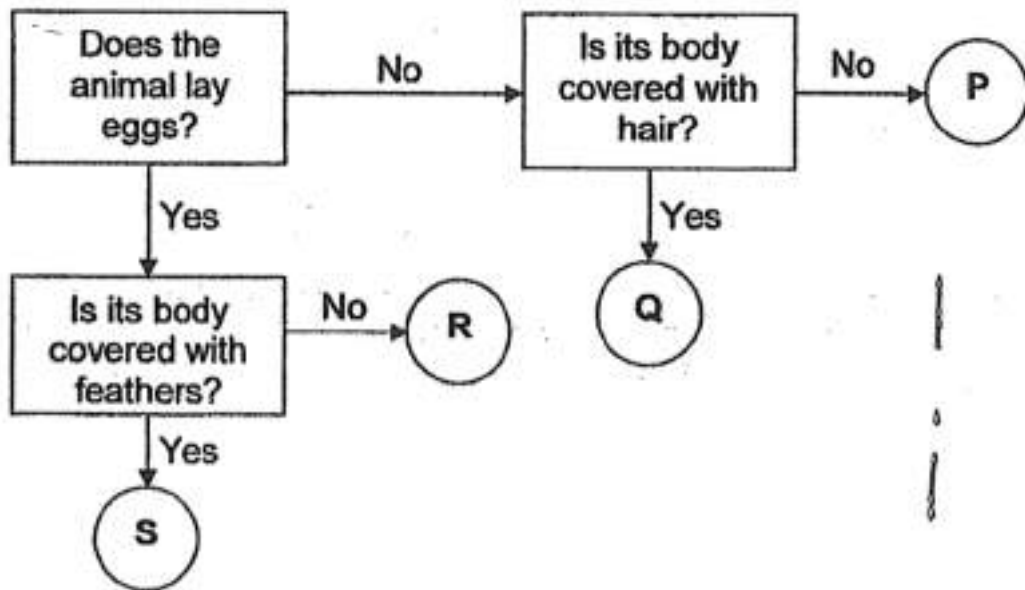
- A) 1  
 B) 2  
 C) 3  
 D) 4

## Question 3 of 50

Which of the following pairs of animals have the same type of body covering?

- A) Sparrow and Crab  
 B) Tiger and Turtle  
 C) Squirrel and Snail  
 D) Fish and Snake

Study the flowchart below.



Which animal is a lizard?

- 
- A) P
  - B) Q
  - C) R
  - D) S

Mrs Lee added something to enable milk to turn into yoghurt. What could she have added?

- 
- A) mould
  - B) fern spores
  - C) mushrooms
  - D) bacteria

Daniel conducted an experiment using three similar pieces of bread. He placed them on separate clean plates and left them on the kitchen table.



**Fresh bread**



**Moist bread**

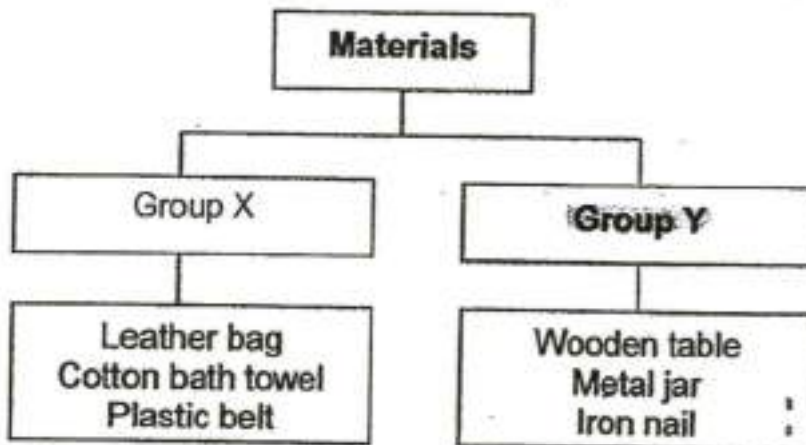


**Toasted bread**

After 2 weeks, Daniel observed mould growing only on the fresh bread and moist bread. What is the most likely reason for his observation?

- 
- A) Mould cannot grow without water
  - B) Mould cannot grow without light
  - C) Mould can only grow with air
  - D) Mould can only grow after being put in the oven

The classification table below shows some materials that have been placed into Groups X and Y.



Which of the following headings best describe the objects classified above?

	Group X	Group Y
1)	Hard	Soft
2)	Flexible	Non-flexible
3)	Non-breakable	Breakable
4)	Made from natural materials	Made from man-made materials

- A) 1
- B) 2
- C) 3
- D) 4

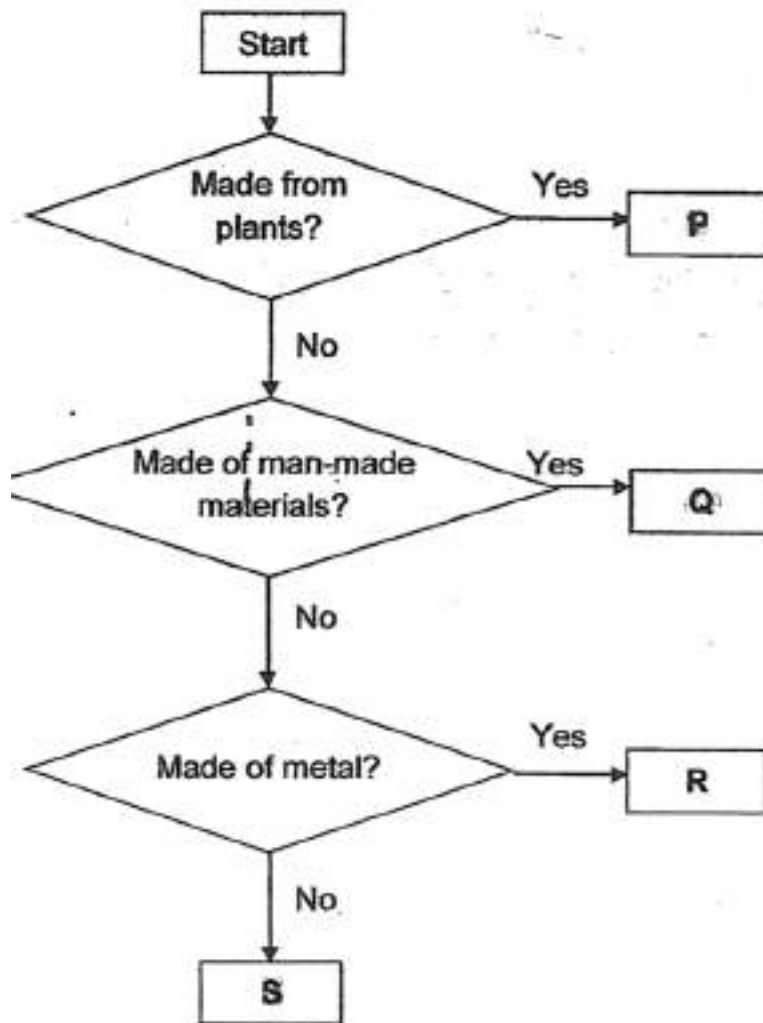
Tom wants to investigate which material is most suitable to make a fish tank for a young child.

Material	Characteristics		
	Waterproof	Transparent	Breaks easily
W	Yes	No	Yes
X	No	Yes	Yes
Y	Yes	Yes	No
Z	No	No	Yes

Which material is the **most suitable** material to make the fish tank?

- 
- A) W
- B) X
- C) Y
- D) Z

Study the flowchart below,

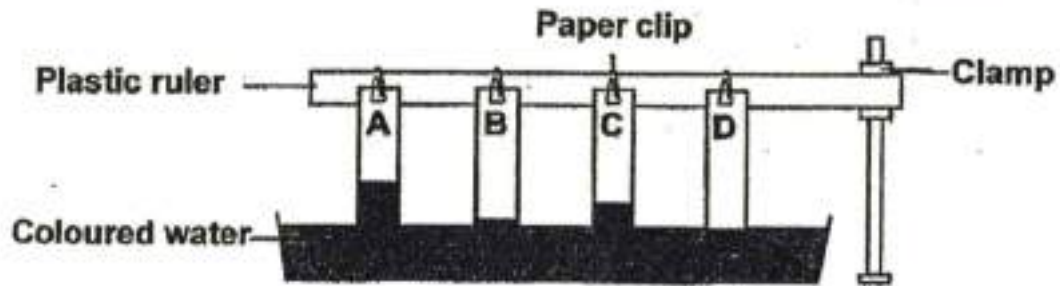


What objects are P, Q, R and S likely to be?

	<b>P</b>	<b>Q</b>	<b>R</b>	<b>S</b>
1)	paper	soil	needle	shirt
2)	key	plastic bag	leather	soil
3)	shirt	metal spoon	toothpick	nail
4)	toilet roll	plastic pail	nail	leather

- A) 1
- B) 2
- C) 3
- D) 4

Sheila wanted to investigate which brand of bath towel can absorb the most water. She carried out an experiment to find out the amount of water absorbed by different materials. The results are shown in the diagram below.

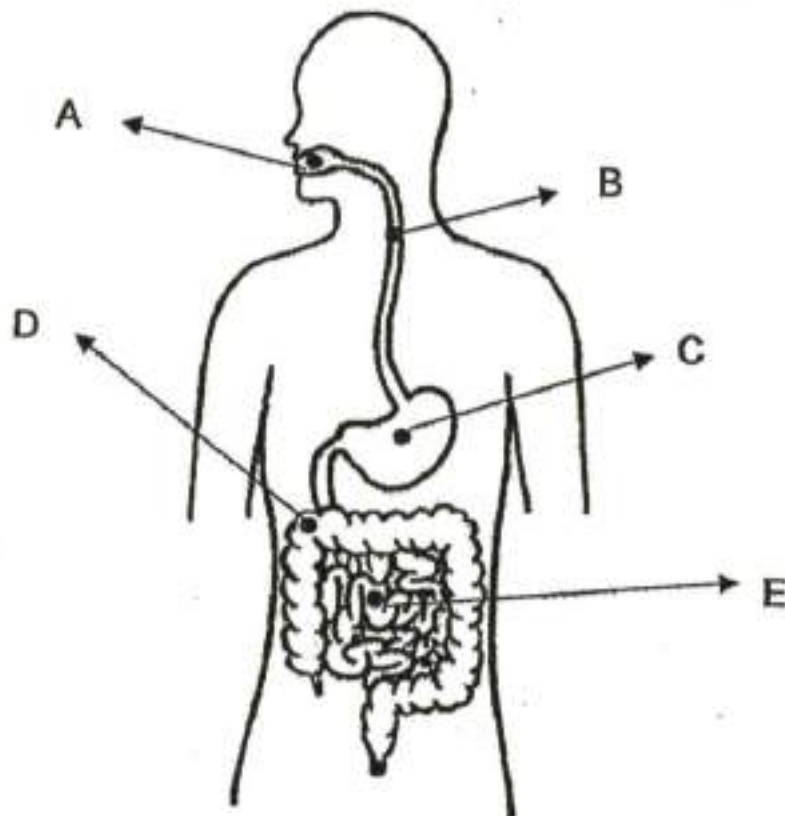


Which brand of towel should she buy if she wants a brand of towel that can absorb the most amount of water?

- A) Brand A
- B) Brand B
- C) Brand C
- D) Brand D

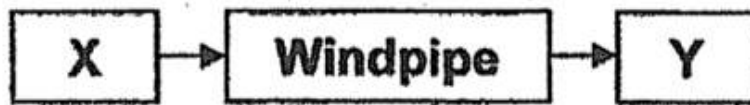


In which part of the digestive system are digestive juices produced?



- 
- A) A and D only
- B) A, C and E only
- C) B, D and E only
- D) A, B, C, D and E

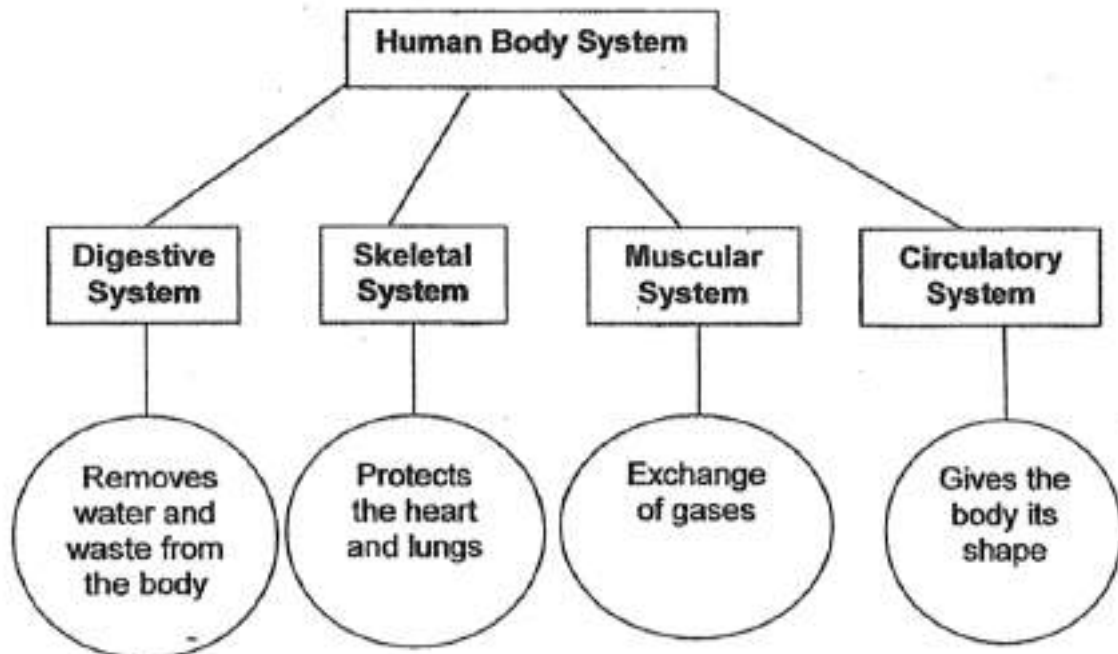
The diagram below shows parts of an organ system.



What are organs X and Y respectively?

- A) mouth and lungs
- B) mouth and heart
- C) nose and lungs
- D) nose and heart

Look at the chart below.

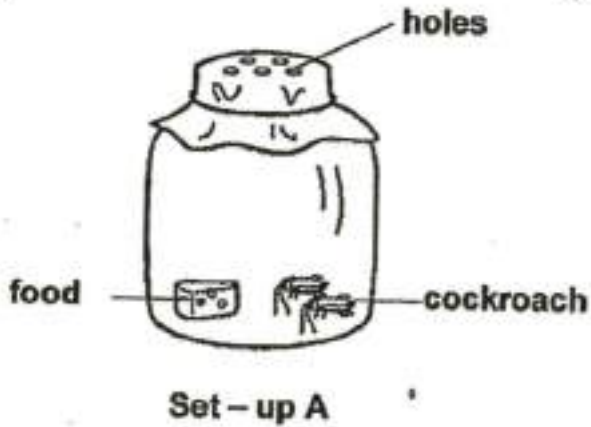


Which body system has been correctly matched to one of its function?

- A) Digestive system and skeletal system only
- B) Digestive system and circulatory system only
- C) Skeletal system and muscular system only
- D) Digestive system, muscular system and circulatory system only

Alisha placed the four set-ups as shown below in a dark room.

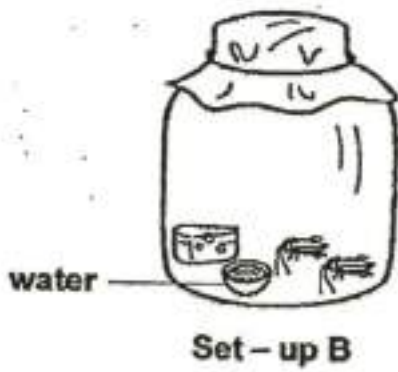
1)



3)



2)



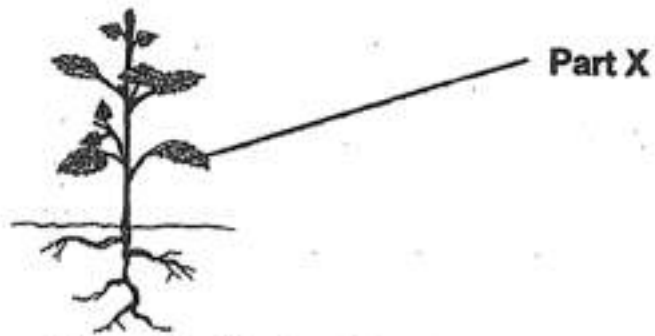
4)



In which set-up, A, B, C or D will the cockroaches die in the shortest time?

- A) Set-up A
- B) Set-up B
- C) Set-up C
- D) Set-up D

The diagram below shows a plant.

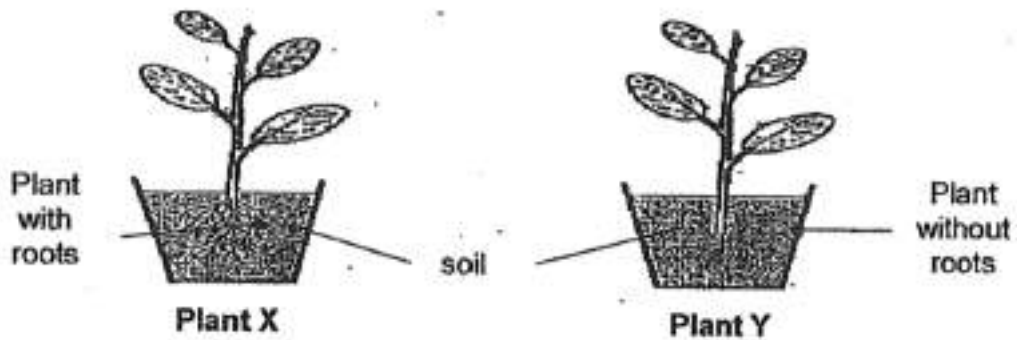


Based on the picture above, identify Part X and its function.

	Part X	Function
1)	Roots	Absorbs water
2)	Flower	Absorbs mineral salts
3)	Stem	Keeps the plant upright
4)	Leaf	Makes food

- A) 1  
 B) 2  
 C) 3  
 D) 4

Alice has 2 similar pots of plants. For Plant Y, she removed all the roots from the plant and placed it back into the soil.

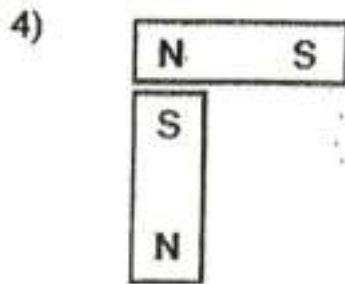
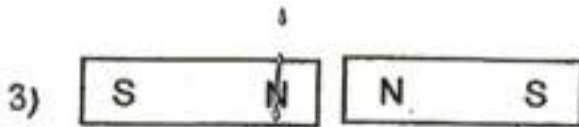
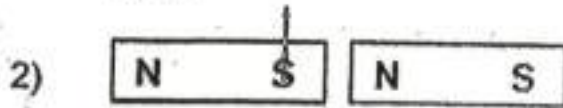
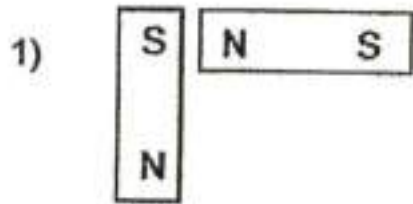


When a strong gust of wind blew at the 2 pots, she noticed that Plant Y fell out of its pot but Plant X did not.

Based on her observation only, what can she conclude about the function of roots?

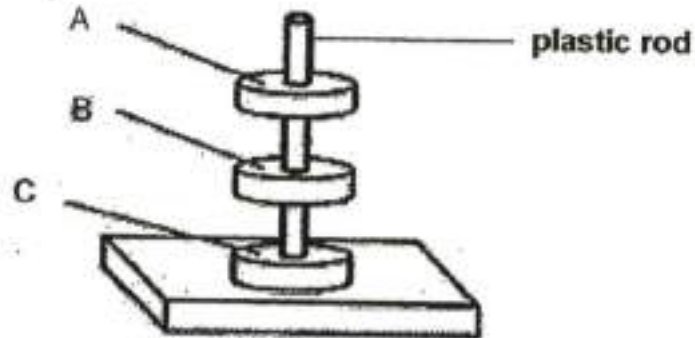
- A) The roots store food in the soil X
- B) The roots hold the plant firmly to the soil
- C) The roots absorb water and mineral salts from the soil
- D) The roots transport food and water to all parts of the plant

Sarah placed 2 magnets together to see if they would repel. Which of the following would the two magnets repel each other?



- 
- A) 1
  - B) 2
  - C) 3
  - D) 4

The diagram below shows three rings A, B and C when they are passed through a plastic rod.



What can A, B and C be?

	A	B	C
1)	copper ring	plastic ring	ring magnet
2)	plastic ring	ring magnet	copper ring
3)	silver ring	ring magnet	ring magnet
4)	ring magnet	ring magnet	ring magnet

- A) 1  
 B) 2  
 C) 3  
 D) 4

Johnny conducted an experiment to make nails A and B into electromagnets as shown below using similar batteries and wires.



He placed the iron nails near some steel clips and recorded the number of clips attracted.

Nail	Number of turns of wire	Number of steel clips attracted
A	10	5
B	20	0

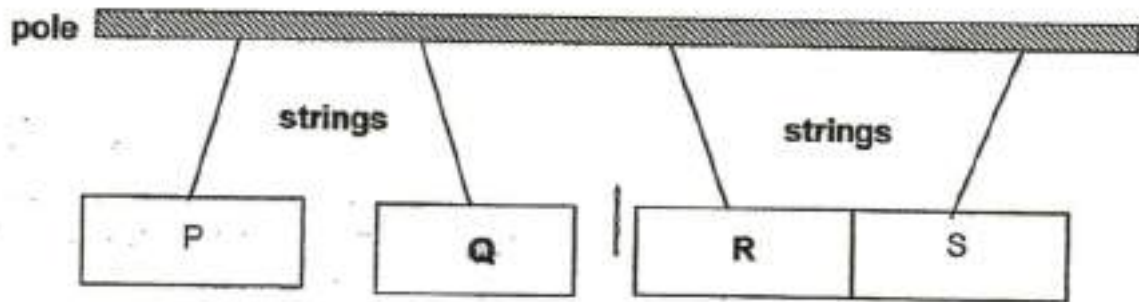
Johnny remembered reading from his Science notes that the greater the number of turns of wire, the stronger will be the nail. Thus, he expected nail B to be able to pick up more steel clips but instead it attracted none.

The likely reason for the result of his experiment would be \_\_\_\_\_.

- A) nail A is made of steel and nail B is made of copper
- B) nail A is made of copper and nail B is made of steel
- C) nail A is made of steel but nail B is made of iron
- D) both the nails are made of steel



Four metal bars, P, Q, R and S of the same size, were tied to a pole using strings as shown below.

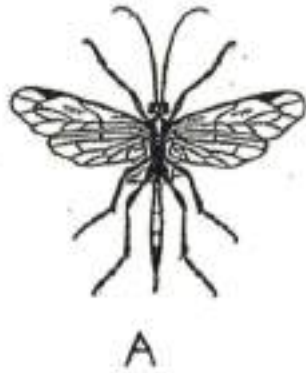


Based on the table below, which of the following observations are correct about the metal bars?

Object	Made of non-magnetic material	Made of magnetic material	Is a magnet
P		√	√
Q		√	√
R	√		
S	√		

- A) P only
- B) R only
- C) R and S only
- D) P and Q only

21. The pictures below show 2 animals.



- a) Based on what you can see only, list 1 similarity and 1 difference between them. (Do not mention their colour, size and shape)  
[2]

Similarity:

---

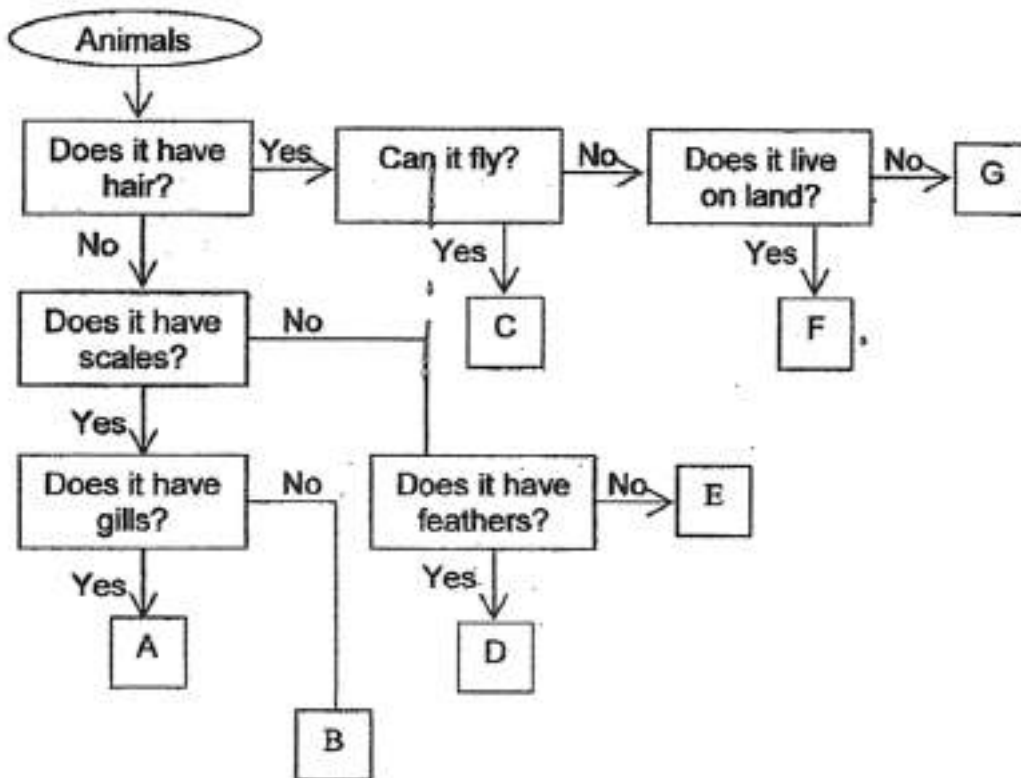
Difference:

---

Which group of animals do both the animals belong to?

---

Mary observed 7 animals A, B, C, D, E, F and G and drew a flowchart to describe the animals as shown below.



a) From the flowchart, which animal(s) is/are mammals?

[1]

- A) A
- B) B
- C) C
- D) D
- E) E
- F) F
- G) G

**Question 25 of 50**

Primary 3 Science (Term 4)

1 pt

From the flowchart, which animal (s) is/are fish?

---

- A) A
- B) B
- C) C
- D) D
- E) E
- F) F
- G) G

**Question 26 of 50**

Primary 3 Science (Term 4)

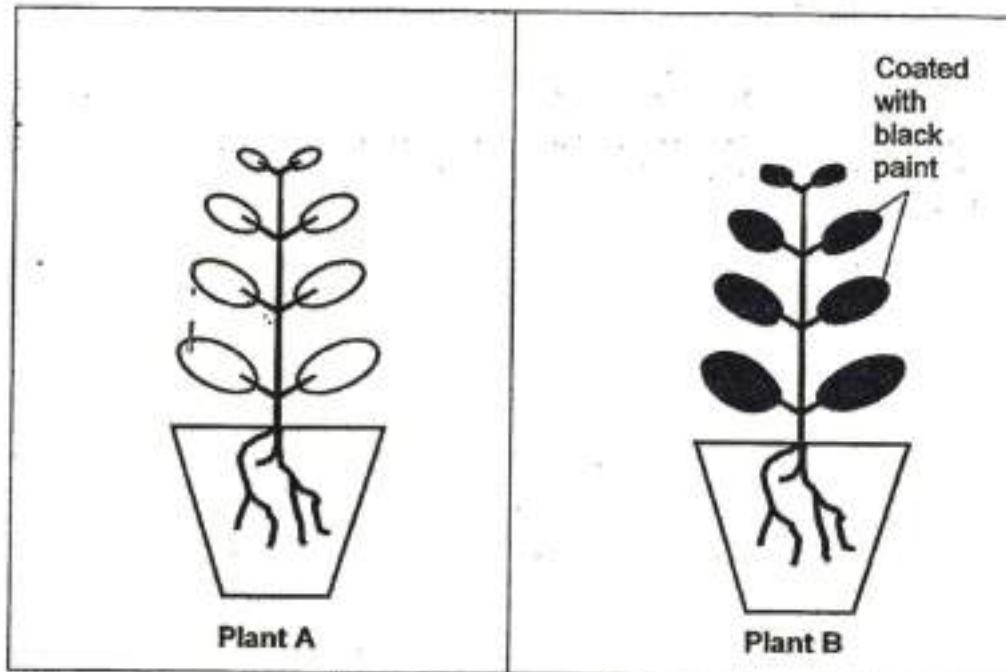
1 pt

Suggest which of the animals in the above classification diagram represents a crocodile?

---

- A) A
- B) B
- C) C
- D) D
- E) E
- F) F
- G) G

23. Olivia set up an experiment with 2 potted plants as shown below. She covered the leaves of Plant B with black paint. Both plants were given the same amount of water daily.

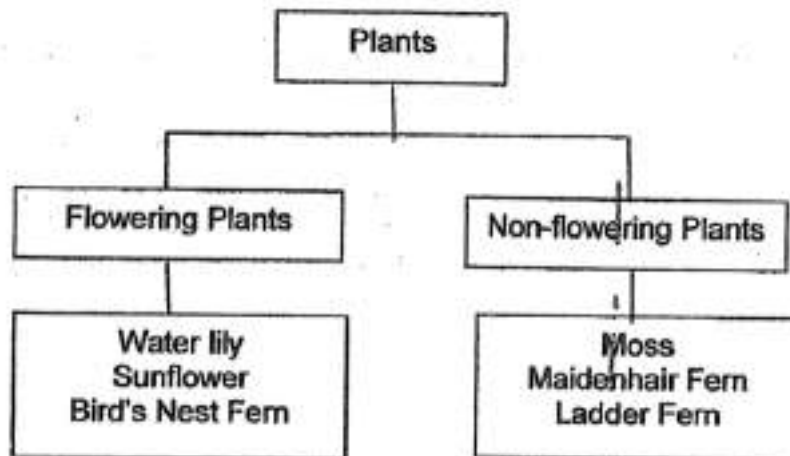


- a) What do you think will happen to both the plants after 1 week? [1]

- A) Leave on Plant A will grow bigger.  
 B) Plant A will die but plant B will grow

- b) Based on the diagrams above, what can Plant A do that Plant B cannot do? [1]

24. Shi Lee drew a classification chart as shown below.



a) Which one of the living things above has been classified wrongly? [1]

---

b) Explain how the living thing you have stated in (a) reproduces. [1]

---

**Question 31 of 50**

Primary 3 Science (Term 4)

1 pt

Pamela had 4 identical pieces of leather that she cut out from an old sofa. She added 5 drops of water onto each piece of leather. Then, she left each piece of the leather under different conditions. Two weeks later, she noticed patches of black and green spots growing on the leather.

Conditions	Number of black and green patches on the leather
Bright and dry	1
Bright and moist	10
Shady and dry	2
Shady and moist	15

a) What are the black and green patches likely to be?

[1]

---

**Question 32 of 50**

Primary 3 Science (Term 4)

0.5 pts

Based on the information above, put a tick (✓) in the correct column below to show whether each statement made by Pamela about the black and green patches is true or false. [2]

They can grow on leather objects

- A) True  
 B) False

**Question 33 of 50**

Primary 3 Science (Term 4)

0.5 pts

They only need air to grow well

- A) True  
 B) False

**Question 34 of 50**

Primary 3 Science (Term 4) 0.5 pts

They grow very well in shady and moist conditions.

---

- A) True  
 B) False

**Question 35 of 50**

Primary 3 Science (Term 4) 0.5 pts

They do not grow well in dry conditions.

---

- A) True  
 B) False

**Question 36 of 50**

Primary 3 Science (Term 4) 0 pts

i. The table below shows the properties of 4 different materials

Properties	A	B	C	D
Flexible	No	Yes	Yes	Yes
Strength	Strong	Weak	Strong	Strong
Transparent	Yes	No	Yes	No

a) Based on the table, describe material D.

---

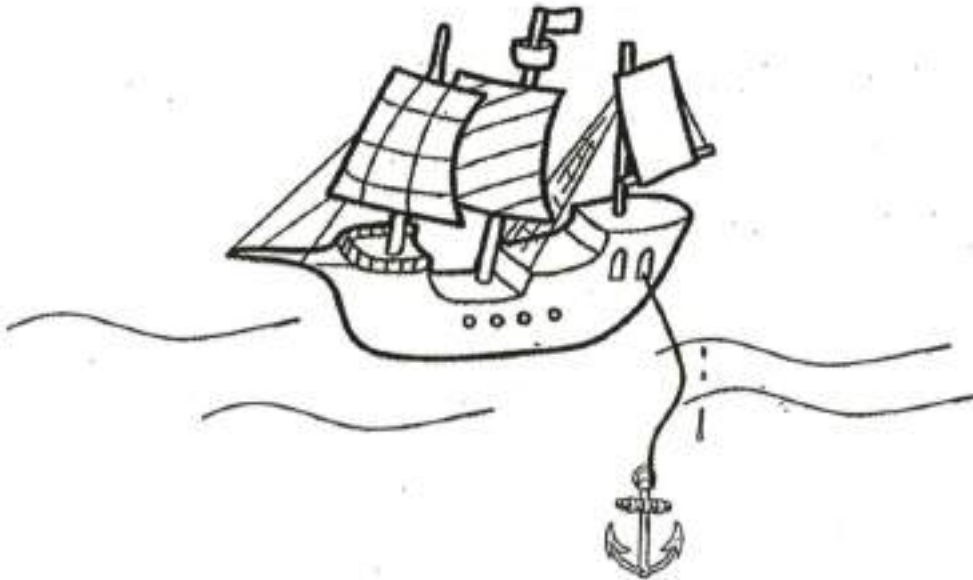
[1]



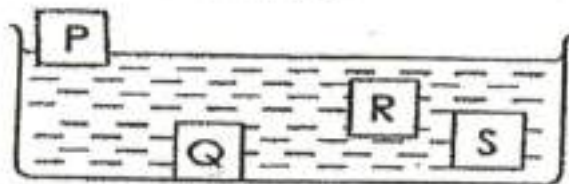
b) Based on the table, state the difference(s) between materials B and C. [1]

---

Katriel wants to build a simple boat. She conducted an experiment to find out which is the most suitable material she could use to build a boat and the anchor.



She sets up an experiment as shown below.



Based on the experiment shown above, which property of materials is being tested in this experiment? [1]

---

**Question 39 of 50**

Primary 3 Science (Term 4) 0 pts

Based on the experiment conducted, which material P, Q, R or S is most suitable to be used to build the boat? Explain your choice. [1]

---

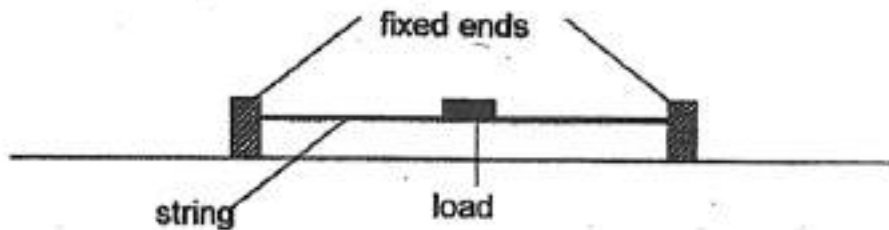
**Question 40 of 50**

Primary 3 Science (Term 4) 1 pt

The anchor helps to prevent the boat from drifting off by gripping the sea bed in the sea. Which material P, Q, R or S is suitable to make the anchor? [1]

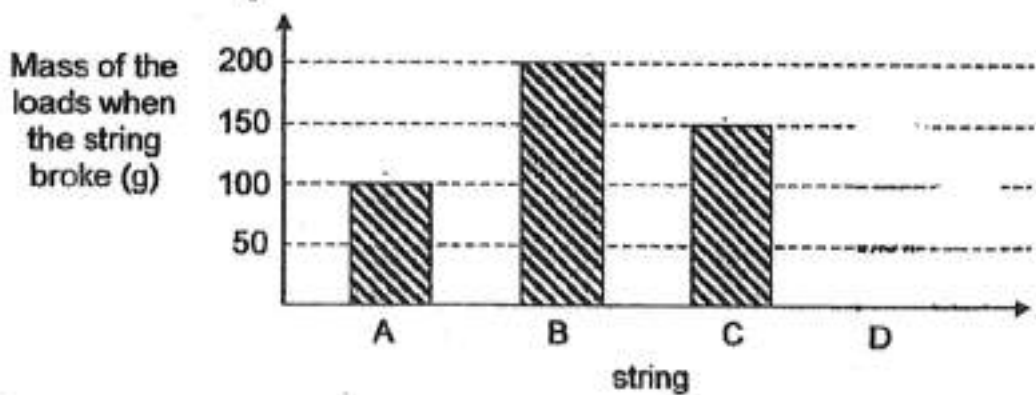
- 
- A) P
  - B) Q
  - C) R
  - D) S

Alysa used the set-up below to study a material.



In her study, she used four strings, A, B, C and D, and some 10 g loads. She added the 10 g loads to the string one at a time until each string broke.

The following graph shows the mass of the loads that can be placed on each string until it broke.



(a) Alysa tested another string, D. String D was able to carry a load up to 100g when it broke. Draw a bar for string D in the graph above. [1]

Based on the graph above, which string, A, B or C is the strongest? [1]

- A) A  
 B) B  
 C) C

**Question 43 of 50**

Primary 3 Science (Term 4)

0 pts

Explain your answer.

---

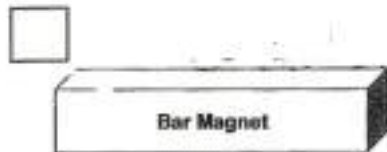
Visa dropped a bar magnet into a box of paper clips. When she picked up the magnet, paper clips were attracted to different parts of the magnet. She counted the paper clips and recorded them in a table shown below.

Part of the magnet	Number of paper clips attracted to the part of the magnet
W	10
X	1
Y	9
Z	3

Based on Visa's results, label the parts by writing W, X, Y and Z in the boxes provided below. [2]

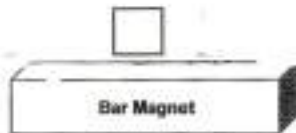
Match the options below:

1. [ ]



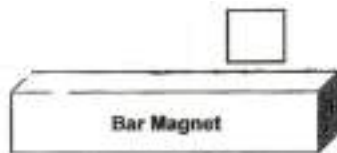
A. Z

2. [ ]



B. W

3. [ ]



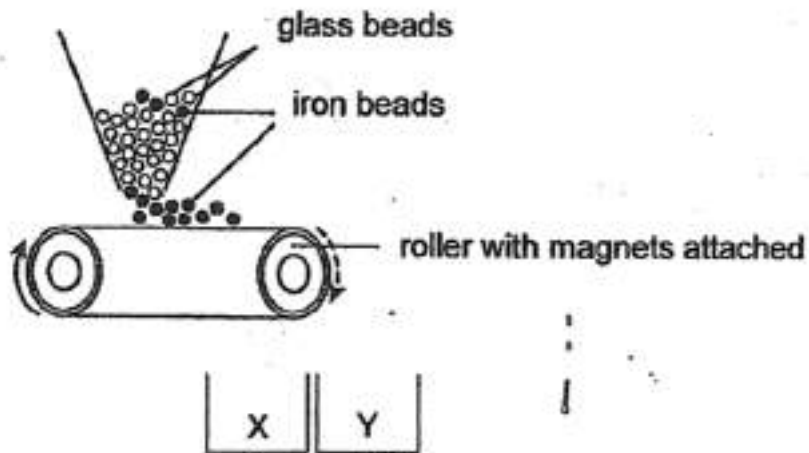
C. Y

4. [ ]



D. X

- A beads factory uses the machine below to separate iron beads from glass beads.



Which containers will the iron and glass beads fall into?

[1]

1. [ ] iron

A. x

2. [ ] glass

B. y

After using the machine for many hours, the roller got very hot and the machine was unable to separate the beads into the two containers.

Give a reason why the machine did not work anymore.

[1]



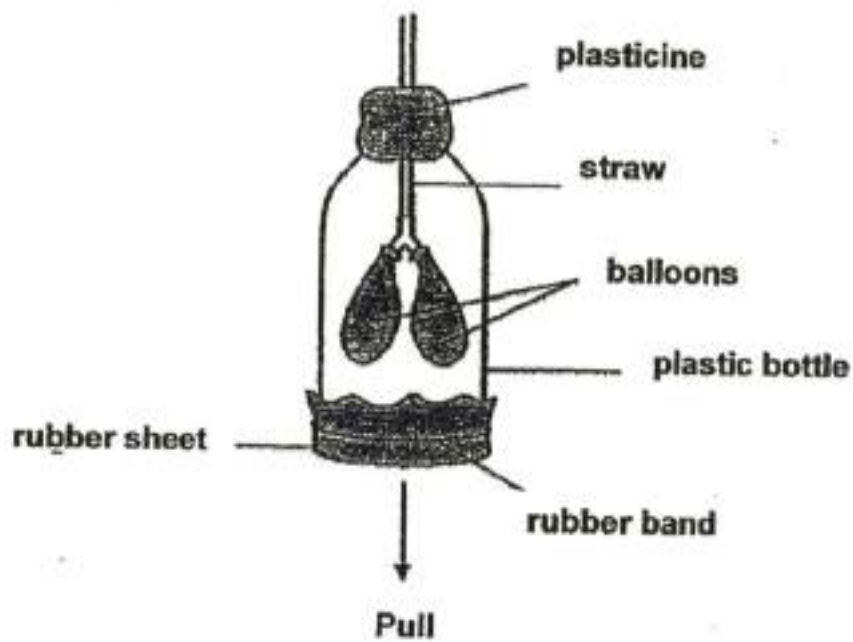
) To stay alive, the seedling needs food, \_\_\_\_\_ and \_\_\_\_\_ [2]

---

The seedling becomes taller and bigger after some time. This shows that it can \_\_\_\_\_ [1]

---

Sophie was asked by her teacher to make a model of the human respiratory system.



Name the organs found in the system which are represented by the following objects in the model. [2]

straw: \_\_\_\_\_

---

balloons: \_\_\_\_\_

---